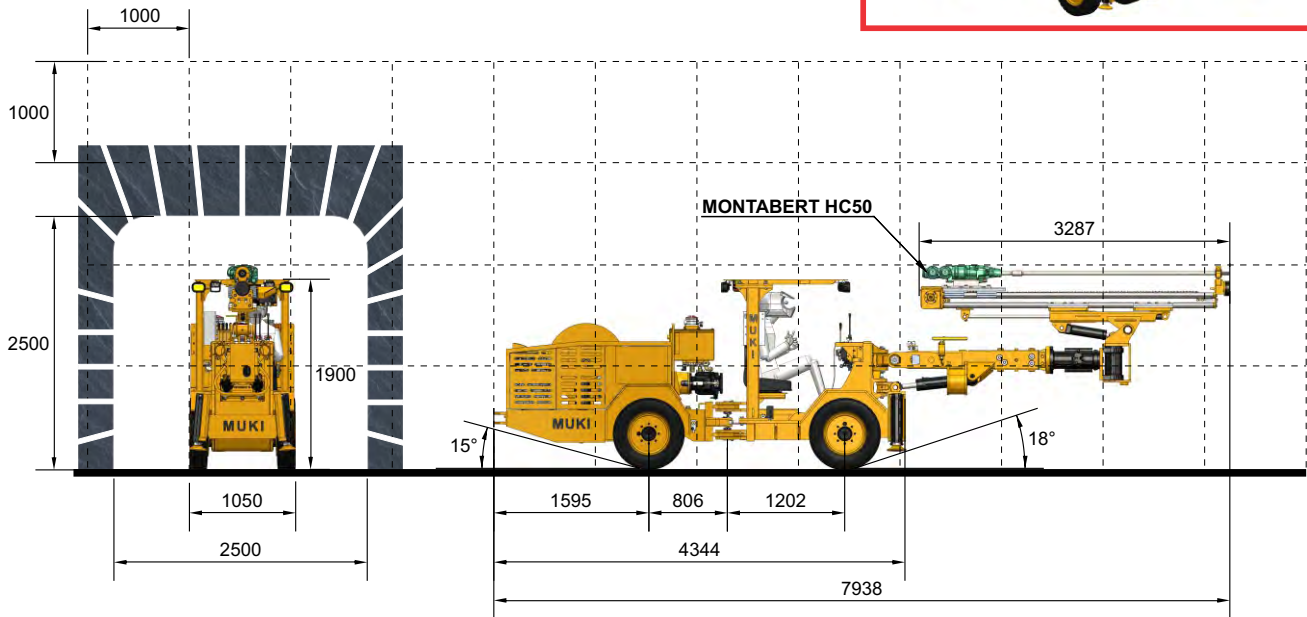


MUKI

Micro Jumbo for Front face & upper drills



CARRIER C22

- 4WD Heavy duty carrier, articulated and rear axle oscillating 14°
- FOPS Canopy certified
- Deutz engine TD2011L04i Tier 3; 57 kW, air cooled
- Poclain / Sauer Hydrostatic transmission, 4 wheel motor, one pump
- Service brake through hydrostatic transmission
- Parking brake SAHR
- Electric box IP64, 550 / 440 / 380 volts, 60 / 50 Hz, ABB motor
- Four (4) tires 7.50 x R15
- Jack (2) hydraulic jacks
- Cable Reel - 60 m

DISPLACEMENT

- Horizontal : 7 Kph maximum speed
- Incline 15° : 5 Kph maximum speed

HIGHLIGHTS

- ✓ Micro jumbo for front face drilling, sections from 2 m height and 1.5 m width up to 3.5 x 3.5 m
- ✓ Upper Drill option, for Cut & Fill method on sections from 1.5 m width at the bottom.
- ✓ 4WD heavy duty carrier, 1.05 m width, self propelled by diesel
- ✓ Montabert HC 50 drifter, 13 kW; Feed for 1.5, 1.8, 2.1 and 2.4 m lengths

DRILLING SYSTEM

- HC 50 (13 kW) Montabert drifter
- Feed length options: 1.5, 1.8 and 2.4 m
- Boom 2-2R square type, 1.000 m boom extension
- (2) Unit Rotation, one 360° and 180° the other one
- 55 kW Power pack, ABB motor, Rexroth A10VO71 series
- Water pump 1.0 kW
- Compressor for drifter lubrication
- Manual Parker directional control valves

DIMENSIONS

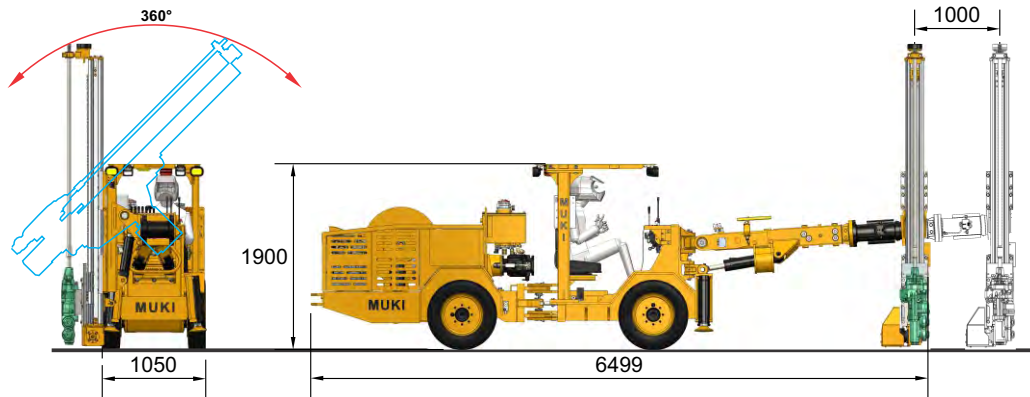
- Width : 1.05 m
- Height : 1.90 m
- Length : 7.94 m
- Weight : 7,200 kg



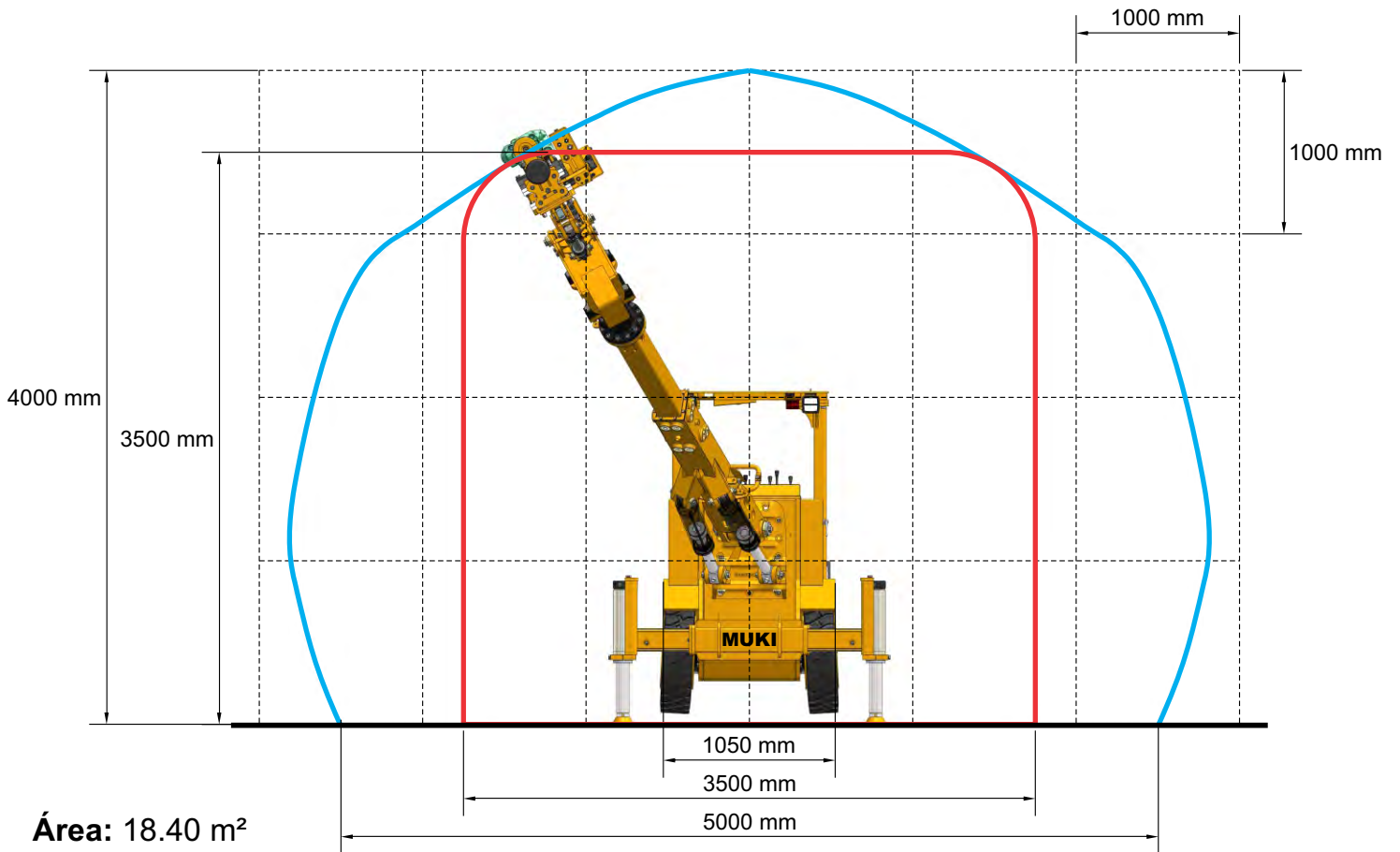


MUKI for Cut & Fill Application:

- ✓ Upper holes, parallel and fan drilling
 - ✓ Feed length standard: 1.8 m; Feed length options: 2.1 and 2.4 m
 - ✓ It can make four parallel holes from one only position
 - ✓ Drilling speed 38 mm bit size: 45 seg/ 2.4 m length hole - medium rock
- Tunneling rig for very small sections
 - Cut & Fill , Shrinkage Methods
 - Production Long Hole
 - Bolting



Face Coverage



Turning radius

